

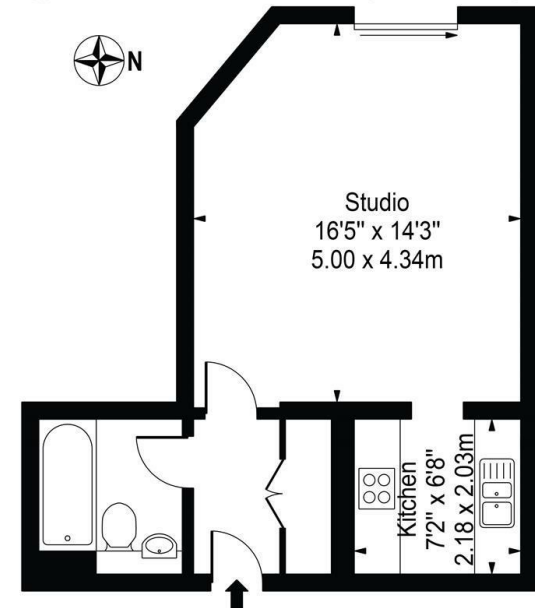


Point West, Cromwell Road, London SW7

Reduced To £360,000

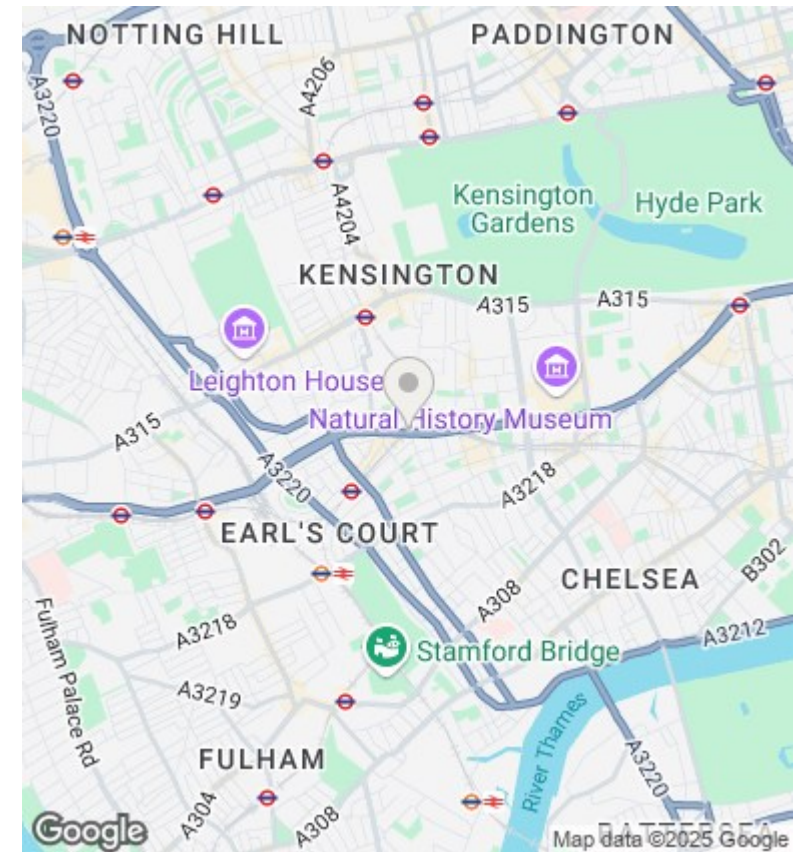
- Large Studio Flat
- Fitted modern kitchen
- Access to outdoor space
- 5mins walk to Gloucester Road
- Separate kitchen
- Integrated appliances
- Wood Floor
- Refurbished to high standard
- 24 hrs Concierge
- Chain Free

Point West
Approx. Gross Internal Area 376 Sq Ft - 34.93 Sq M



Second Floor
For Illustration Purposes Only - Not To Scale

This floor plan should be used as a general outline for guidance only and does not constitute in whole or in part an offer or contract. Any intending purchaser or lessee should satisfy themselves by inspection, searches, enquiries and full survey as to the correctness of each statement. Any areas, measurements or distances quoted are approximate and should not be used to value a property or be the basis of any sale or let.



Directions

Viewings

Viewings by arrangement only. Call 02070990800 to make an appointment.

Council Tax Band

D

EPC Rating:

C

Energy Efficiency Rating		
	Current	Potential
Very energy efficient - lower running costs		
(92 plus) A		
(81-91) B		
(69-80) C		
(55-68) D		
(39-54) E		
(21-38) F		
(1-20) G		
Not energy efficient - higher running costs		
England & Wales	EU Directive 2002/91/EC	